



 THE MARYLAND-NATIONAL CAPITAL PARK AND PLANNING COMMISSION
Prince George's County Planning Department



Final Project Presentations

Session 6

Prince George's County
Neighborhood Planning Academy

November 8, 2023



FINAL PROJECT

- Describe a planning related issue, challenge, or concern (topic) in your community.
- Research existing planning policies, strategies, and recommendations related to your selected topic.
- Consider how, when, and who you might engage to implement a solution to your topic.
- Consider possible solutions, tradeoffs, and other perspectives.
- Present an action plan or project.



FINAL PROJECT

- Share the results of your work in one of the following formats:
- Written Essay/Speech, no longer than 350 words
- Collage of images with a brief speech/description
- Image slideshow with a brief narrative (2-3 minutes in length)
- Video with your own commentary (2-3 minutes in length)
- 3D Model

GREG ANDERSON

NOISE POLLUTION: THE SYMPHONY NO ONE WANTED

By: G.A.Anderson

Nov. 8, 2023

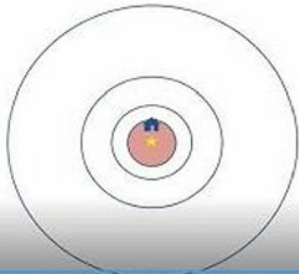
WHAT'S THE PROBLEM?

- According to the NIH relatively low decibel noises can have surprising effects on human health:
 - Hearing Loss being the obvious effect but there are many non-auditory effects too.
 - These include but are not limited to: increased risk of ischemic heart disease, myocardia infarction and stroke.
- It is important to note that low frequency sounds, commonly emitted by gas powered leaf blowers (“GLB”) have been found to be far worse for human health than the high frequency sounds emitted by their electric cousins.
- Given that there are more than 11 million (“GLB”) in the U.S. as of 2017 according to the NIH one can see why this is a big problem that will only get worse.

BATTERY VS. GAS

The Quietest BATTERY Leaf Blower

The quietest BATTERY leaf blower affects only where it is operating.



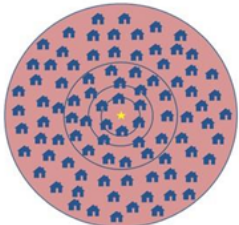
Stihl BGA 100: 1 Home

Click icon recorded

Typical GAS-powered Blowers

They emit noise above 55 decibels even at **400** feet.

In urban neighborhoods (1/8th acre lots), they can affect more than **90** homes.



Stihl BR 700x; Redmax EBZ8500

The typical gas-powered leaf blower today can disturb 90 homes in a neighborhood.

THANK YOU FOR YOUR TIME AND ATTENTION

- A big THANK YOU to MNCPPC for organizing this event!
- Citations
- https://mgaleg.maryland.gov/cmte_testimony/2022/ecm/IEIOFegIEWd9Tr8W0kKAGAwVUBcrnPk3g.pdf
- <https://www.ncbi.nlm.nih.gov/pmc/articles/PMC6707732>

DAN BEHREND

No Stroads

Dan Behrend

How to turn a STROAD

STREET



into a



ROAD

Purpose:

Building community wealth within a successful place.

Purpose:

Moving people and goods quickly between two successful places.



1

Slow traffic.

2

Put people, bicyclists and transit first, not cars.

3

Focus on building, filling gaps and expanding existing structures.

4

Embrace complexity. Stay adaptable.

1

Limit access. Seek to close existing accesses.

2

Keep people and bikes away from cars in a separate, safe place.

3

Don't try to build anything.

4

Simplify. Move vehicles quickly. Period.

CULTIVATE!

- Stroad => A combination of :
 - A **Street** — a complex place where people interact with businesses and residences (not a place for fast vehicles); and,
 - A **Road** — a high-speed route to move motor vehicles fast and efficiently between places.
- Strods try to perform two conflicting purposes. They end up doing neither well.
- Prince George's County has many dangerous Strods.



Roads, not Stroads

- Reduce the number of accesses
- Prioritize movement of motor vehicle traffic
- Do not develop/redevelop the corridor





CENTRAL AVENUE AT MORGAN BOULEVARD
ENHANCED MULTIMODAL CONNECTIVITY

Streets, not Stroads

Build neighborhoods, places, and streets that are safe and welcoming for people outside of cars.

- Build Places that are human scale, not car scale.
- Prioritize the activity & safety of people over movement of cars.
- Shift people from driving to walking, biking, & public transit. Build a lot. Places people need to travel for their daily needs found within walking distance.

Policies: Land use (e.g., long-term planning, zoning map); Transportation (e.g., Master Plan of Transportation; Level of Service vs. Vehicle Miles Travelled).

Decision makers: M-NCPPC, DPW&T, County Council, State (e.g., MD Dept. of Transportation).

LOIS BROWN

Transportation

Prince George's Countywide Rideshare Locations (CRL) for Uber and Lyft
DWP&T and DPIE local authorities

I am interested in developing County Rideshare Locations (CRL) designated sites where pedestrians can quickly meet their Uber or Lyft rideshare so that drop-offs and pick-ups are manageable, do not interrupt the traffic flow, and are safe. Instituting CRL would reverse unexpected drop-offs and pick-ups, slow traffic, and be safe for pedestrians. **Equity** means safe access for all.

Here is the groundwork I have set forth:

I began by discussing my idea with thirty neighbors in the community, gauging their interest, and gathering verbal feedback on the potential benefits and concerns to get the community consensus, of which twenty-three agreed. Seven residents felt that there are times when you must exit your ride because of traffic delays, and hopping out of the car at random spots seems like a good option but not a safe one. Next, I identify suitable locations that are central and easily accessible sites within our neighborhood, such as a community center, parks, shopping parking lots, and, of course, bus stops.

Here is the plan:

Contact local authorities depending on local regulations, DWP&T, and DPIE to discuss my project with local authorities.

Set Guidelines and Rules: Establish basic guidelines for using the rideshare locations; this could include rules regarding behavior, parking, and safety.

Promote the Initiative: Spread the word within the county through flyers, social media, or neighborhood meetings to inform residents about the new rideshare program and locations.

Provide Clear Signage: Install signs indicating designated rideshare locations; this helps residents quickly identify the spots.

Coordinate with Rideshare Services (Optional): If there are existing rideshare services in our county; consider contacting them to inform them about the designated spots.

Encourage Safety Measures: Remind pedestrians to prioritize safety when participating in ridesharing; this includes verifying the driver's identity, and license plate and following applicable safety guidelines.

Monitor and Address Concerns: Keep an eye on the rideshare locations and address any concerns or issues that arise over the first year; this could include issues like overcrowding or misuse of the CRL.

Collect Feedback: Regularly gather feedback from pedestrians to see how the rideshare location works, and if any improvements can be made.

Establishing CRL requires cooperation and communication within the county. It is essential to work together to create a safe and convenient option for pedestrians to rideshare. **Equity** means safe access for all.



CASSANDRA

BURCKHALTER

Cassandra Burckhalter Final Project Speech: Neighborhood Planning Academy (NPA)
Our Strength is Understanding the Vision of Prince George's County And
The Power of Effective Communication!
11/8/2023

Good evening, distinguished guests! I want to thank Marian Honeczy & Lynda Ramirez for their leadership during the past 5 Sessions, and for organizing this lovely graduation ceremony. Your dedication and hard work have not gone unnoticed. Thank You! And thank you to *ALL* of our session guest speakers.

We meet here this evening in the midst of a world marked by wars, economic, and social instability. This is a critical time for our nation and the world is constantly changing. However, there are **Opportunities** and **Success**, in the midst of chaos! ***Congratulations Co-Hort 1 on OUR graduation from the Inaugural Neighborhood Planning Academy – WE DID IT!***

My topic for this evening is entitled:

Our Strength is Understanding the Vision of Prince George's County And
The Power of Effective Communication!

Over the past 5 weeks, I've gained a better understanding of the PGC development and planning process. I've also learned that the Planning Department has a *lot* of major responsibilities in helping to create communities of lasting value throughout the county. Some of these responsibilities during the planning process, includes but not limited to, helping to establish community visions; envisioning diverse community possibilities for the present and the future; working with diverse populations and key stakeholders; ability to respond to uncertainty; and determining how to attract quality businesses.

I am going to briefly discuss a recently approved planning project, that sparked interesting conversations from residents, who are concerned about attracting quality businesses in the county.

Case Number: DSP-04067-14

Case Title: Woodmore Commons

Location: The northeast quadrant of the intersection of MD 202 & St. Joseph's drive. (Wegmans)

Zone Description: Residential | Multifamily

Description: Minor amendment to a detailed site plan for a use change from an office to a grocery store (Lidl), including revisions to architecture, parking, and signage.

Approved: 10/25/2023

Several residents expressed 1) their frustrations about how they weren't notified in advance of this minor amendment; 2) how they were denied the opportunity to provide comments to the proposed changes; 3) why the county is building a poor grocery store; 4) is this not a conflict of interest with Wegmans; 5) there is no vision for the county; and 6) the planning dept along with the County Council always looks out for the best interest of the developers and not the residents.

I responded, because I signed up many years ago to receive the planning department emails for my area of interests, I was notified of this development activity application change in February/March/August and September of 2023; and encouraged these residents to immediately sign up to start receiving emails.

While I personally believe the planning department has done a good job at attempting to communicate the various development projects throughout the county, the concerns of these residents cannot and should not be ignored. ***Our strength relies on everyone understanding the vision of PGC; and***

The power of effective communication is putting tools in place to ensure information is always communicated to residents in a timely and transparent manner.

I recommend the Planning Department consider implementing the following:

- ✓ Request permission from the District Council, when applicable, to add, an “Amendment Update Notice” section in the *PGC County Council Connection Weekly Constituent Email Newsletter*; and
- ✓ For all received/approved planning projects, start referencing, verbally and in writing, the associated “Element” that is listed in the *Prince George’s 2035 Approved General Plan*.
 - I.e., this specific development project is aligned with both, the *Healthy Communities* and *Economic Prosperity* Elements.

In closing, I believe these minor recommended communication enhancements, coupled with the planning department email updates, and road sign postings (which are too small to see while driving or on public transportation), could help further educate and energize county residents.

**Our Strength is Understanding the Vision of Prince George’s County And
The Power of Effective Communication!**

Thank You!

RACHEL BUSH

Connected Bike Lane

Rachel Bush

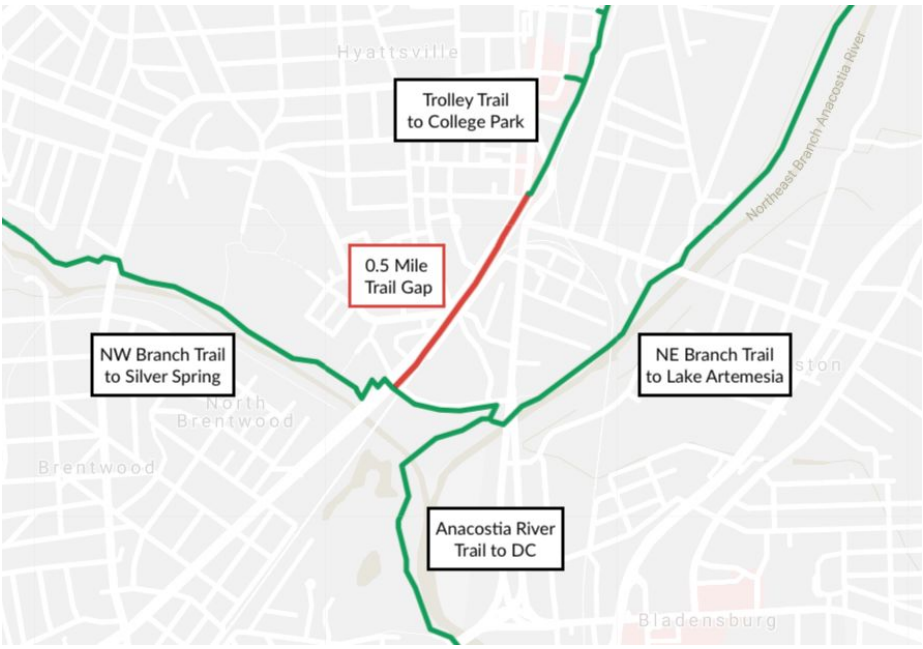


Mount Rainier, MD

This is the coverage area for the Aerial Photo Map



Source/Copy right: ESRI StreetMap NA



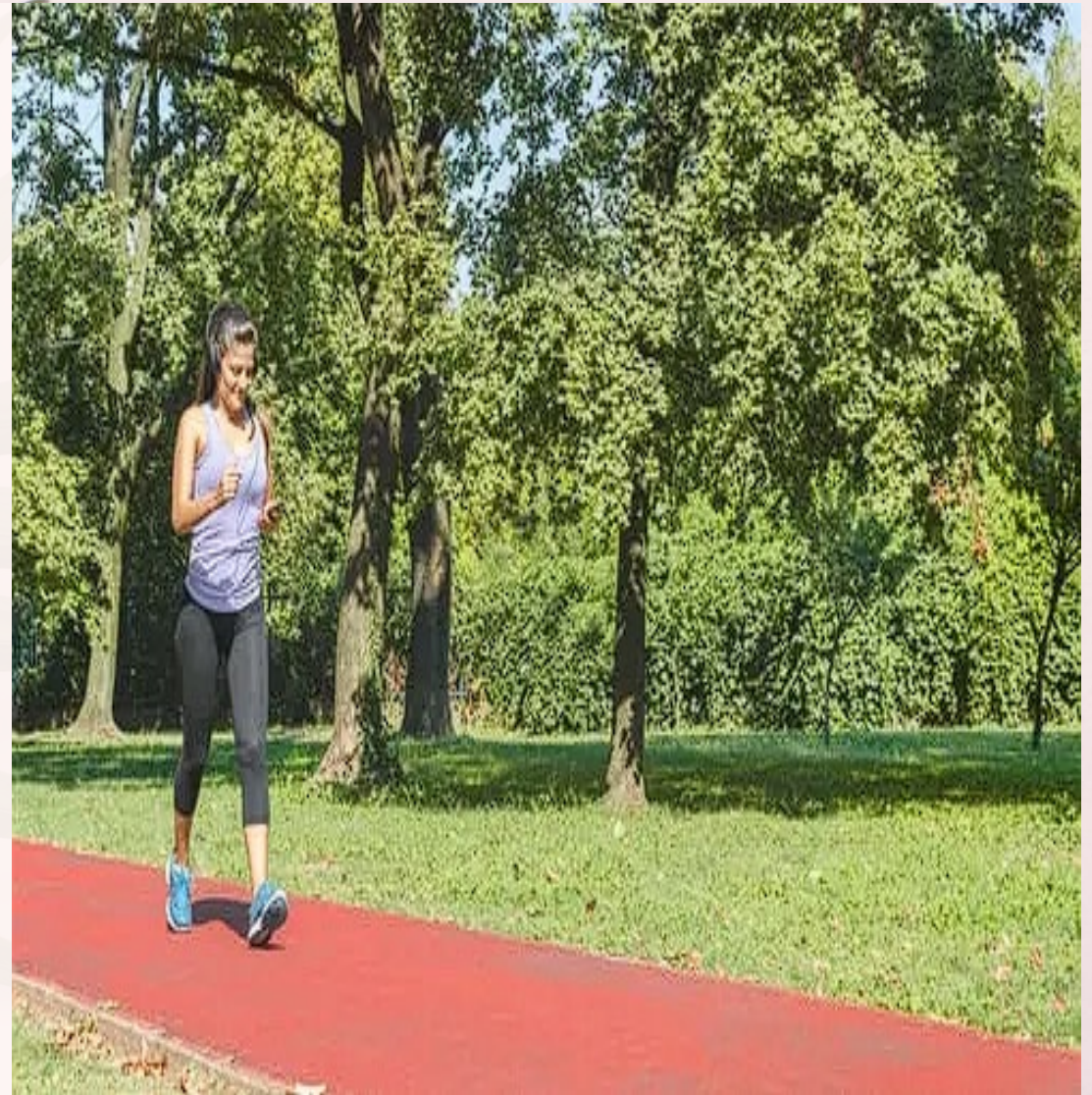
DANIELLE CARTER

Let's Walk!

Mount Rainier is the most densely populated city in the entire state of Maryland, with roughly 8500 residents inside of .61 square miles.

Roughly 70% of those residents live between 4 large apartment complexes on the “north” side of town.

In this part of the city, there is not enough adequate space for outdoor exercise or activities other than a tennis court and plain field that once was a school athletic field behind the Mount Rainier Nature Center.



Where?



What?



Who?



TAMARA DAVIS BROWN

Neighborhood Planning Academy FINAL PROJECT

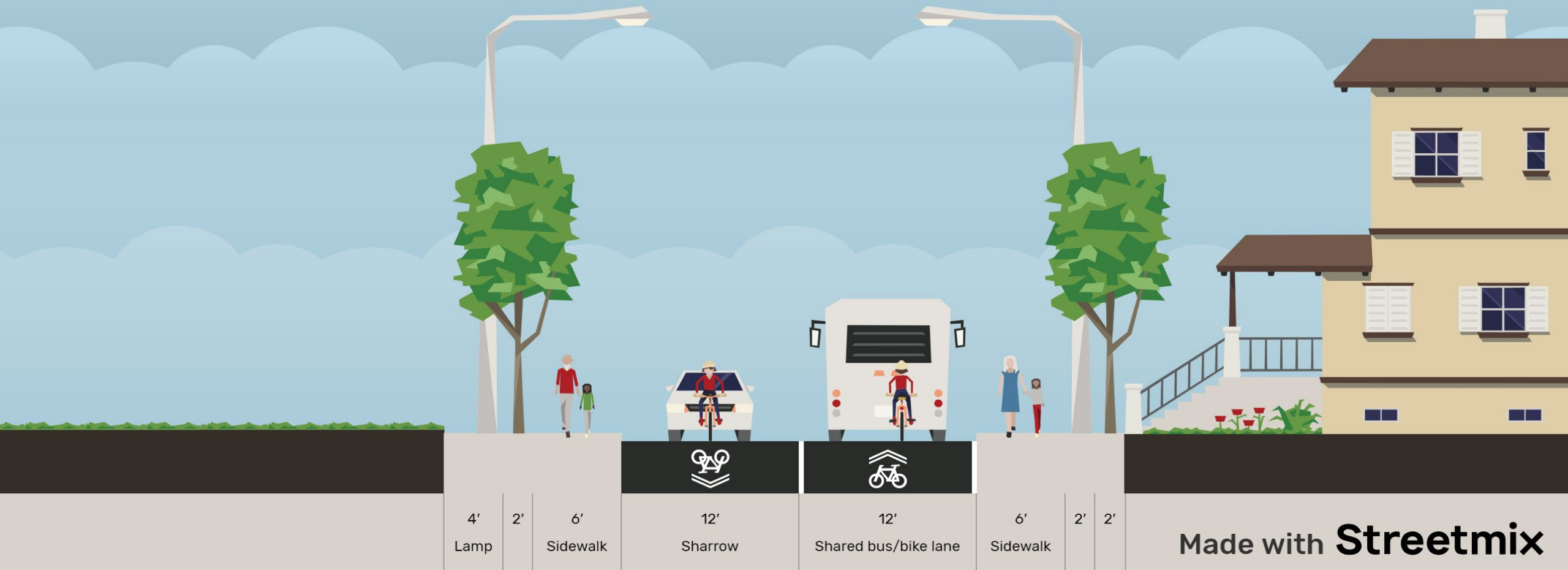
TAMARA DAVIS BROWN

(With the assistance of her Transportation Civil Engineer Daughter)

JESSICA BROWN, EIT

November 8, 2023

MD 223



Made with **Streetmix**

Expanding South County Transit



Legend

Primary Roadways

Road Typology

- Freeway
- Highway
- Major Road
- Other Road
- <all other values>

Existing The Bus Route

- Existing The Bus Route

Existing The Bus Stops

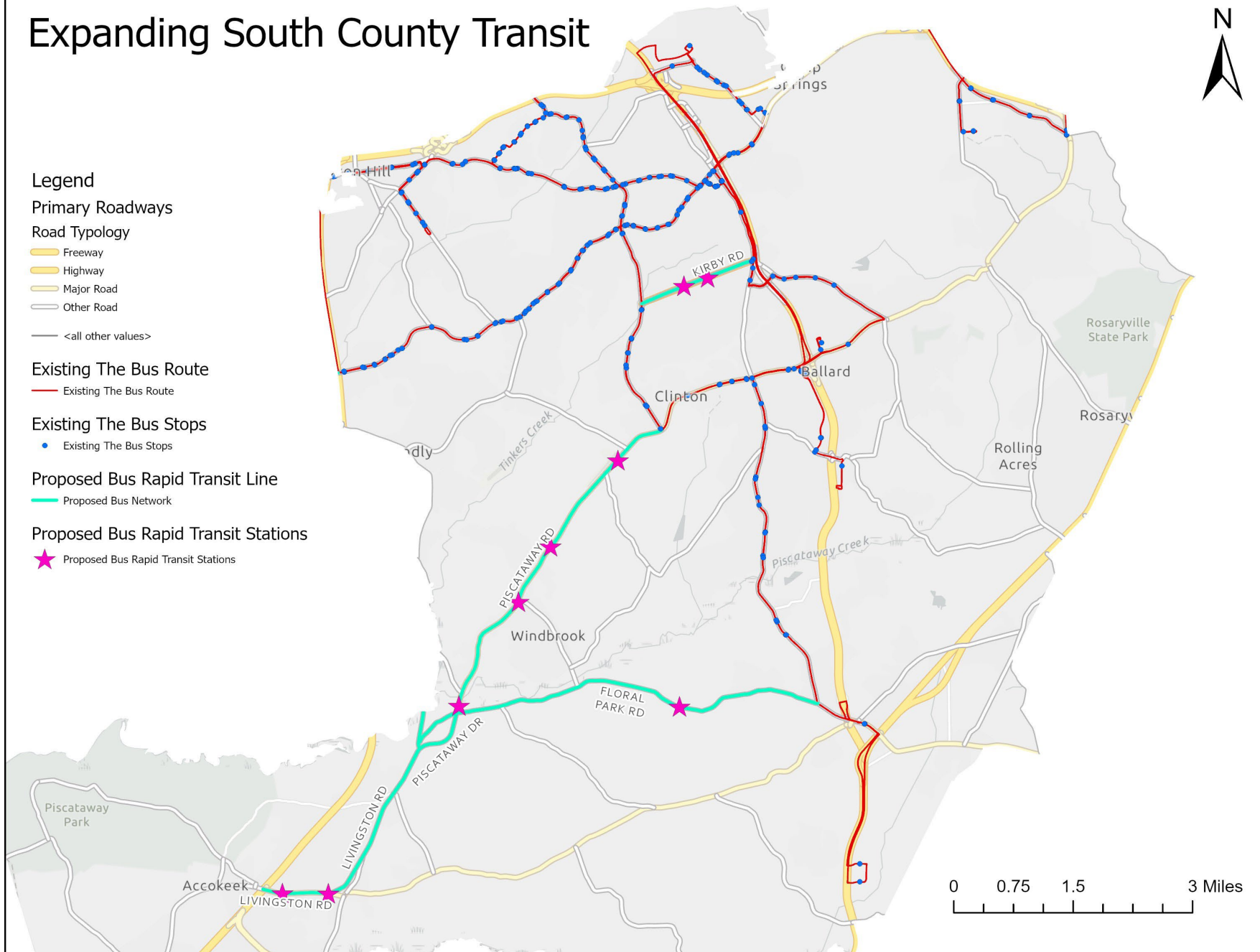
- Existing The Bus Stops

Proposed Bus Rapid Transit Line

- Proposed Bus Network

Proposed Bus Rapid Transit Stations

- Proposed Bus Rapid Transit Stations



DIANNA DAVIS-SMALL



Prince George's Neighborhood Planning Academy
Final Project – Preserving the Character of
Fort Washington, Maryland

DIANNA L. DAVIS-SMALL

NOV. 8, 2023

NO MORE CONVENIENCE STORES AND TOBACCO SHOPS

10909A LIVINGSTON ROAD
FORT WASHINGTON, MD 20744
CB-031-2023



984 SWAN CREEK ROAD
FORT WASHINGTON, MD 20744
CB-009-2023



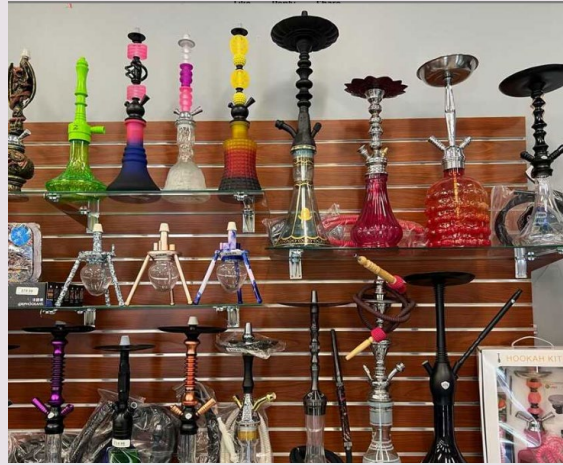
County Bills

CB-031-2023

- ✓ AN ORDINANCE CONCERNING CONVENIENCE STORES - GAS STATIONS - TOBACCO SHOPS - TOBACCO PRODUCT DISPLAY AND SALES AREA for the purpose of modifying the definitions of Convenience Store, Gas Station, and Tobacco Shop uses in the Zoning Ordinance to clarify the percentage of certain uses that may be dedicated to the display and sales of tobacco and cannabis-related products; and providing for a transition period to ensure compliance.
- ✓ The bill amends the definition for a convenience store and a gas station to require no more than 32 square feet or 5% of the gross floor area, whichever is less, to be dedicated to the sale of tobacco or tobacco accessories. In addition, the bill amends the definition for tobacco shop, electronic cigarette shop, or retail tobacco business to designate any convenience store or gas station that provides more than 32 sq. ft. or 5% of the gross floor area to tobacco products as a tobacco shop, electronic cigarette shop or retail tobacco business.
- ✓ Went into effect September 5, 2023

CB-009-2023

- ✓ AN ORDINANCE CONCERNING TOBACCO SHOPS, ELECTRONIC CIGARETTE SHOPS, OR RETAIL TOBACCO BUSINESSES for the purpose of amending the Zoning Ordinance to include reasonable parameters as to hours of operation, sign displays as a criteria for approval of Special Exceptions; amending the Zoning use tables concerning such use in Non-Residential Base Zones, Transit Oriented/Activity Center Base Zones, and Planned Development Zones, for Tobacco Shops, Electronic Cigarette Shops, or Retail Tobacco Business uses; and providing for an amortization period by December 31, 2025, in furtherance of the public safety, health, and welfare of citizens and residents of Prince George's County.
 - ✓ This bill amends the additional requirements for specific special exception uses standards for tobacco shops, electronic cigarette shops, or retail tobacco business uses to require their hours of operation to be from 10:00 a.m. until 10:00 p.m.
-



Do products like these help maintain the integrity of a community?

It's not a matter of if you can have these businesses but where you have them!

RECOMMENDATIONS

- ✓ Partner with the local police department in Community Policing and have regular contact with the Community Policing Officer
 - ✓ Make this a re-occurring topic at District Council Leadership meetings to keep this concern before leaders
 - ✓ Collaborate with local civic associations, homeowners' associations, and non-profit organizations to address this topic
 - ✓ Make this a reoccurring topic at Bi-annual meetings
 - ✓ Leverage communication streams and social media platforms to keep this concern before residents
 - ✓ Monitor and attend public hearings
 - ✓ Advocate for stricter zoning ordinances
 - ✓ Push convenience stores and tobacco shops out of commercial and residential areas into industrial zones
 - ✓ Engage a See Something Say - Something Campaign for monitoring compliance with age limitations of youth
 - ✓ Conduct a Pulse Survey to gauge the level of satisfaction of convenience stores and tobacco shops
 - ✓ Write a letter to post in the local newspaper on the impact of convenience stores and tobacco shops
-

MICHELLE DUVERNAY

MY DREAM OF AN IDEAL COMMUNITY

The ideal community:

The neighborhood enters and exits at Central Avenue (Rt 214). The amenities of the community are significant and reflect the values of the residents. We have bus service that leads to the Blue Line (Metro). Shopping centers, banks, and grocery stores.

A high-quality community represents a safe and pleasant environment. My dream came true when I purchased my HOME at Cameron Grove a 55+ Active Adult Community. The community was conceived on July 1, 1999 by an Annapolis based developer; Stavrou Associates Inc. New Acadia Lane Condos were first to be built. The condos can be identified by phrases used commonly to describe them such as single level living, maintenance-free living, and carefree living.

Our community consists of:

In addition to condos single family homes, cottages, and villas. Total of 750 residences. The amenities are the important reasons that I purchased my condo.

Tennis Courts

Pickel ball Courts

Shuffle board

State of the art fitness center

Library

Business Center

Massage rooms

Saunas

Whirlpool

Swimming pool – indoor and outdoor

Arts and crafts room

Catering kitchen

Sports lounge and playing card room

Life style director and resort center assistance

The Cameron Grove Active Adult Community is tucked away from the hustle and bustle of city life. It is here, where the air is fresh and the surroundings seem to be never ending. This unique *active adult* community is welcoming to return of old-fashioned values. This is friends old and new, will gather to celebrate life milestones.

YES, this is my dream community. CAMERON GROVE!

BY MICHELLE DUVERNAY



Cameron Grove Resort Center Grand Opening

*The Homeowners of Cameron Grove
and
Stavrou Associates Incorporated*

*Cordially invite you to attend
The Grand Opening and Presentation
of the
Cameron Grove Resort Center
Thursday, July 27, 2006
5 - 10 o'clock pm*

*An evening filled with
Tropical Delights & Entertainment
for Cameron Grove Homeowners
Attire: Summer Elegance*

*Parking Limited
Door to Door Roundtrip Shuttle provided
(Handicap Accessible)*

DAN MCDONALD

For my final project, I chose to explore how park land in Prince George's County is zoned, established, and maintained. My broad goal was to better understand the planning process for parkland in the county, and my specific goal was to understand whether it would be possible to establish a "microforest" in a county park.

A microforest is a dense, tiny forest with high biodiversity. There is research to suggest that microforests as small as 10'x10' can absorb large amounts of carbon from the air and significantly improve biodiversity even far beyond their borders. In a suburban county like ours, parks are often mostly easy-to-maintain grass, which is less effective at combating climate change than forests or meadows.

Like other development in the county, the establishment of park land happens under the umbrella of multiple different plans. Plan 2035 sets a vision for the county that includes elements like health and protection of natural resources; at the functional master plan level, the Formula 2040 Master Plan says "parks plus recreation equals experience," while outlining how to make that vision reality; and at a more local level, my town has a master plan from 1994 for Subregion 2, Planning Area 68 that refers to the importance of parks. When taken together, these plans set the stage for the establishment and maintenance of parks as an essential piece of achieving the overall vision for the county.

Once approved under these plans, parks are established by the Prince George's County Parks and Recreation Department with new park land obtained using around \$7 million per year from the Capital Improvement Fund. The Department then also maintains the county's parks, enforcing relevant regulations and laws therein.

Having learned all of this, and with the help of our instructors, I have connected with the Parks and Recreation Department, and they are open to considering a plan for volunteers to establish a microforest. My next task is to write a justification, based on the various plans mentioned above, and a planting and maintenance plan that I can share with the Department to seek approval for the project.

WANDA PETERSON- --- PARKER

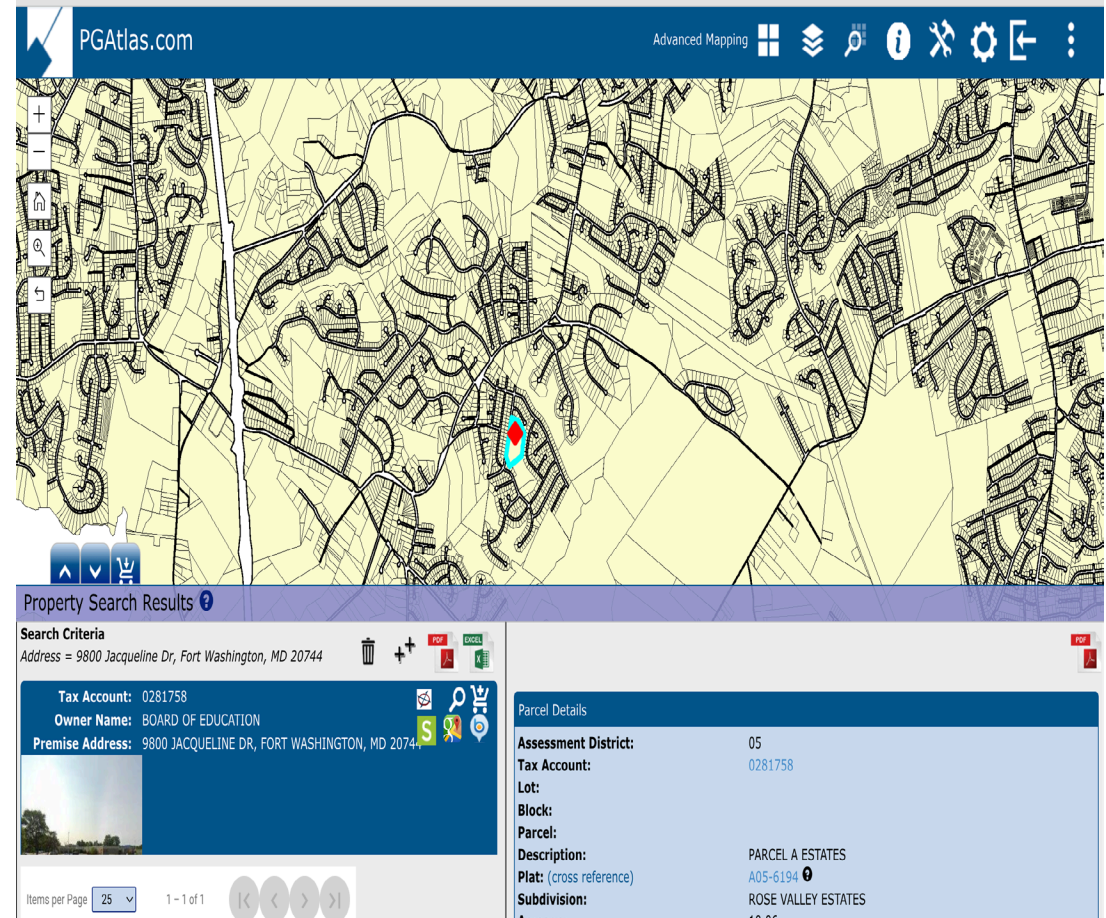
**Create the Rose Valley "Community Center"
at Rose Valley Elementary School
Fort Washington, Maryland 20744**

**Wanda Peterson-Parker
PGCNPA Fall 2023**

Rose Valley Community Center

Background:

- “Prince George’s County 2035 is an approved 20-year general plan commenced during 2014. The plan provides a shared vision for making Prince George's County a competitive force in the regional economy, a leader in sustainable growth, a community of strong neighborhoods and municipalities, and a place where residents are healthy and engaged.”
- Rose Valley Elementary School is a public school in a suburban setting that adjoins Rose Valley Park (10+ Acres). Park amenities include Playground Equipment; Baseball/Softball fields; Tennis Court; Multipurpose Fields for sports such as Baseball, Football (Boys & Girls Club) and Association Football/Soccer; Rentable Picnic Shelter with Picnic Tables and Walkable Trails and parking.
- Rose Valley was built during the 1950’s and residents are multigenerational and multiethnic.
- Other local schools include Tayac Elementary; IJ Gourdine Middle School and Friendly High. There are numerous neighborhoods within walking distance to Rose Valley.



PGAtlas.com Advanced Mapping

Property Search Results

Search Criteria
Address = 9800 Jacqueline Dr, Fort Washington, MD 20744

Tax Account: 0281758
Owner Name: BOARD OF EDUCATION
Premise Address: 9800 JACQUELINE DR, FORT WASHINGTON, MD 20744

Parcel Details

Assessment District:	05
Tax Account:	0281758
Lot:	
Block:	
Parcel:	
Description:	PARCEL A ESTATES
Plat: (cross reference)	A05-6194
Subdivision:	ROSE VALLEY ESTATES
Accession:	10.05

Rose Valley Community Center

Plan 2035: (5 of 8) Housing & Neighborhoods – ... to attract and retain residents, strengthen neighborhoods, and promote economic prosperity; (6 of 8) enable social interaction; (7 of 8) Healthy Communities: ... creating a more informed (connected) community that promote active and knowledgeable lifestyles.

Similar Rec Centers include Potomac Landing Elementary School; Fort Washington Forest and Largo-Kettering Community Center.

The Prince George's County Planning Department (MNCPPC) reviews county Educational Facility Master Plans.



Rose Valley Community Center

Adding a Center will enhance local communities by further engaging local residents.

It is possible that Center staff will be able to walk or bike to work, based on the number of local neighborhoods and residents.

Consider how, when, and who to engage for implementation for Rose Valley Community Center.

Through various communications, as soon as possible, engage residents; School Board, County Council; County Delegates, and Prince George's County Planning Division accordingly.

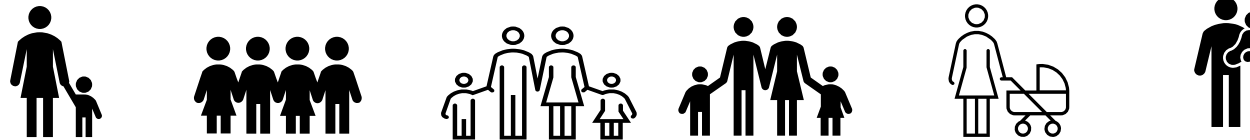
Challenge: obtaining budget/funding for school modification, staffing, operations and maintenance. Consider using a current wing of Rose Valley Elementary for access like that for Fort Washington Forest.



Rose Valley Community Center

In conclusion, this paper places an emphasis on “community” building in Prince George’s County.

The Rose Valley Community Center can provide a feeling of fellowship among neighborhood residents. By sharing neighborhood facilities that provide a means to focus and engage on areas of current emphasis, residents can be better prepared to take on challenges in support of Plan 2035.



JOYCETTEE WARD

Neighborhood Planning Final Project

Describe a planning related issue, challenge, or concern (topic) in your community. Research existing planning policies, strategies, and recommendations related to your selected topic. Consider how, when and who you might engage to implement a solution to your topic. Consider possible solutions, tradeoffs, and other perspectives. Present an action plan or project.

Prince George's County Use Solar Power for Lighting

I would like Prince George's County to invest into solar power beginning with lighting throughout the County.

Solar helps with climate change and the greenhouse effect of excessive carbon dioxide in the County and world's atmosphere. It's more efficient and cost effective due to energy coming from the sun. It has the potential to reduce heating costs, create more jobs, and enhance the quality of breathable air for the County's residents. While it also helps the County to become less reliant on external sources and making it a worthwhile investment for the County.

According to the Solar Energy Industries Association (SEIA) a 2022-2023 study, Maryland is ranked 19th national in use of solar, had enough solar panels installed to power 214,309 homes, 5.53% of the states' electricity is from solar, there are 4,921 solar jobs and are 190 solar companies in the State. (19 manufactures, 97 installers/developers and 74 misc. others.)

Earlier in November, Executive Angela Alsobrooks announced the Prince Georges County Transit Transformation Initiative to enhance the Prince George's County bus service, The Bus. The Bus is being transitioned with clean energy technologies to reduce greenhouse gas emissions and combat climate changes. 70% of the buses will be transitioned by 2035 and 100% by 2040 to electric.

This initiative to use electric technologies is also being looked at for the Prince George's County school buses. The Maryland Department of Environment (MDE) announced awarding funds in 2019 to pilot electric or alternative fuel school buses.

While the usage of electric cars has increased, charging stations are few and far in the County, the cost to purchase, maintain and installing a private charging station are a few things you'll need to consider.

Installing homes w/solar panels had been a major push within Prince George's County for several years, but it appears the associated cost and related concerns have once again made homeowners waiting for better technology or assistance with the installation, as well as other concerns.

Another way that solar could be enhanced throughout the County is through community solar farms. Community solar farms can be used by both homeowners and renters. Solar farms generate renewable electricity for the grids. Utility companies distribute to the customers and as a subscriber you buy a share of the energy from the solar farm....sold at a discount, allowing you to pay at a lower rate than the utility company. Solar credits appear on your utility bill to reduce what you owe the utility company.

I researched the DAMS and as of August 2022, a ground solar farm has been approved for the Bock Family LTD Partnership to be built at the intersection of Livingston and Piscataway Roads. There is currently a ground mounted solar farm on Kirby Road in Clinton, MD built by Alder Energy Systems, Charleston, SC, owned and operated by Nautilus Solar.

Currently the Brown Station Road Sanitary Landfill and the Sandy Hill Creative Disposal Project in the County will take advantage of using a solar farm. {posted Patch, Bowie May 2014}

The County's residents would benefit with more solar power being implemented because its sustainable, renewable, and plentiful. To start, some of the areas the County could transition more solar power to are neighborhood streets, road and highway lighting, all parking lots and garages and requiring new homes being built to install solar panel roofs.

Instead of a flower garden why not a ground solar garden in front of your house? That solar garden would help when there's a blackout on a stormy day.

More research would be required before writing up a recommendation proposal for the Prince George's County Planning Board, contacting both the County and State coordinating with the Maryland Department of Environment and any other agencies (Transportation Planning and Special Projects) and attending town hall meetings to address more solar power usage.

ANGELA WEARRIEN

Describe A Planning Related Issue Or Concern In My Community:

Affordable Housing:

CITY OF LAUREL; ARTICLE III.
- AFFORDABLE HOUSING
PROGRAM



Consider How, When And Who I Might Engage To Implement A Solution:



The mayor and city council of Laurel;
Mayor Craig Moe



301-725-5300



laurelmayor@laurel.md.us



Present Plan Of Action

Various stakeholders should be involved for a effective plan of action such as non-profits, government agencies etc.

Assess:

- › A thorough assessment of the local housing market to expound the extent of affordable housing shortage.
- › Identify demographic groups that requires the most need; such as seniors, low income families and special need individuals.

Allocate funds:

- › Allocate funds for affordable housing initiatives, such as grants and government subsidies.

Homeownership Assistance:

- › Offer down payment assistance programs to help low- and moderate-income families achieve homeownership.
- › Support housing counseling services to educate potential homebuyers about the home purchasing process.

Tenant Protections:

- › Enact and enforce laws to protect tenants from discrimination, eviction without cause, and unsafe living conditions.
- › Establish renter's rights organizations to provide legal and advocacy support for tenants.

Homelessness Prevention:

- › Implement homeless prevention programs that provide emergency rental assistance, case management, and supportive services to individuals and families at risk of homelessness.

Community Engagement

Involve community members in the planning and decision-making process to ensure that affordable housing developments align with local needs and preferences.

Conduct public awareness campaigns to reduce stigma and misconceptions surrounding affordable housing.





Data Monitoring and Evaluation

Continuously monitor and evaluate the impact of affordable housing initiatives to assess their effectiveness and make necessary adjustments.